

Decision Support Systems Directory

an Envirolink Tool

The Envirolink Decision Support Systems (DSS) Directory contains a range of relevant models and decision support systems that have been developed or used in New Zealand to support decision making. It was originally established in 2011 and has recently been reviewed and updated in 2018.

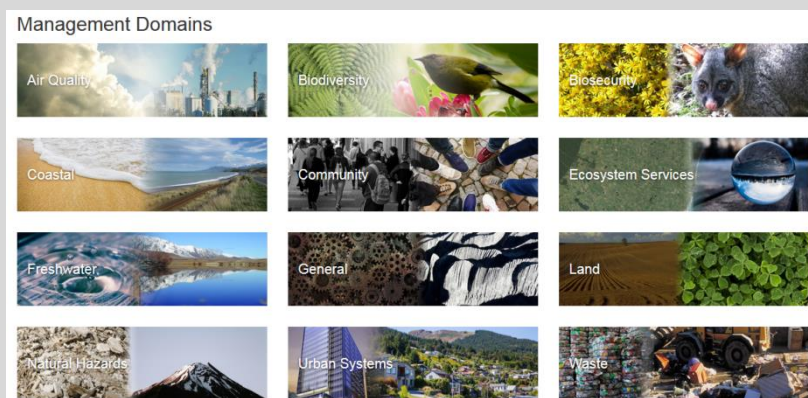
It now has a simplified layout, improved functionality and contains 75 DSS's and 45 case studies.

The DSS Directory contains an overview of each model or framework and summarises their key attributes (metadata). Where available case study examples of how DSS's have been applied are also provided. Links and references for further information are also included.

The aim of this DSS Directory is improve the uptake and uses of these tools by providing end users of decision tools with an understanding of:

- what tools are available,
- how they can or have been used, and
- what is required to use them.

The Directory provides access to DSS's either by main Management Domains from the Home Page tile layout (see right) or via a specific search page which allows for simple or advanced searches.



The benefits of using this DSS Directory are:

- (i) it makes it easier to compare the range of tools available,
- (ii) you can see how these DSS have been used in other Regions and what is required to use them
- (iii) an increased knowledge of these tools will improve their uptake and use.

If you have other suggestions of DSS's or case studies that could add value to the Directory there is a [suggestion box](#) area available.

Take a look:

Go directly to the [Envirolink Tools DSS Directory](http://tools.envirolink.govt.nz/about/suggestion-box/) (http://tools.envirolink.govt.nz/about/suggestion-box/)

or Check out the [DSS overview video on YouTube](#)